

Best choice, Brightest price



## SPECIFICATION

	KTS-582L	KTS-582R	KTS-585L	KTS-585R
<b>Distance Measurement</b>				
<b>Max.Range (under fair weather)</b>	Single prism	5.0km	5.0km	5.0km
	Triple prism	8.0~10.0km	8.0~10.0km	8.0~10.0km
	Reflectorless		300m	300m
Reading	Max:9999999.999 Min:1mm			
Accuracy	with reflector :2+2ppm reflectorless:5+3ppm			
Measuring Time	Fine mode:1.0s, Tracking mode:0.5s			
Atmospheric Correction	Manual input, Auto correction			
Prism Constant	Manual input, Auto correction			
<b>ANGLE MEASUREMENT</b>				
Measuring Method	Absolute continuous			
Dia. of Raster Disk	79mm			
Minimum Reading	1" / 5" Selectable			
Accuracy	2"		5"	
Detection Method	Horizontal: Dual, Vertical: Dual			
<b>TELESCOPE</b>				
Image	Erect			
Tube Length	154mm			
Effective Aperture	45mm, (EDM: 50mm)			
Magnification	30x			
Field of view	1° 30'			
Minimum Focus Distance	1m			
Resolving Power	3"			
<b>AUTO COMPENSATOR</b>				
System	Dual axis Liquid-Electronic			
Working Range	± 3'			
Accuracy	3"			
<b>VIAL</b>				
Plate Vial	30" / 2mm			
Circular Vial	8" / 2mm			
<b>OPTICAL PLUMMET</b>				
Image	Erect			
Magnification	3x			
Focussing Range	0.5m ~ ∞			
Field of View	5°			
<b>Display</b>				
Type	Dual face 3.5 Inches Colorful Touch Screen Windows CE.NET			
<b>ON-BOARD BATTERY</b>				
Type	Rechargeable Ni-H battery			
Voltage	DC 6V			
Continuous Operation Time	8 hrs			
<b>OTHERS</b>				
Dimension	200 × 180 × 350mm,			
Weight	6.0kg			

## ACCESSORIES (OPTIONAL)



**Reflector Prism System**  
ADS 17(Single) ADS30(Triple)



Dia.:25.4mm  
Offset:-17.5/-7.5mm  
Mini Pole:30cm×4, Φ 10mm

**Mini Prism System ADSmini112A**



ATS-1(Aluminum) ATS-2(Wooden)  
**Prism Pole & Prism System ADS107**



**KTS-580(R) SERIES**  
**WINDOWS TOTAL STATION**



**GUANGDONG KOLIDA INSTRUMENT CO., LTD.**  
Add: 3/F, HaiWangBuilding, Tian He Industrial Park, Ke Yun Road, Guangzhou 510665, China  
Tel: +86-20-85542075 Fax: +86-20-85542136  
E-mail: export@kolidainstrument.com http://www.kolidainstrument.com



# WIN(REFLECTORLESS) TOTAL STATION KTS-580(R) SERIES

## Colorful Touch Screen

- Operating by direct touch, without the help of keyboard.



## Large Screen, With Windows Operating System

- use 3.5inches extremely large LCD display of 240x320dpi shows a large amount of information at a time
- Windows CE .net 4.2 operating system makes the measuring operation easy and clear



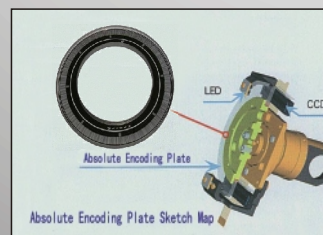
## Graphic Display

- Using graphic menu in stead of traditional operation procedures, convenient for beginners.



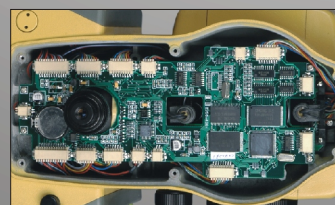
## Absolute Encoding

- Absolute Encoding. Manual initialization free. If the station is shut off for low power, the angle data can be saved when restarted.



## 32 Bit CPU

- 32-bit CPU for high speed operation, huge space is available for programs and data storage.



## Windows Operating System

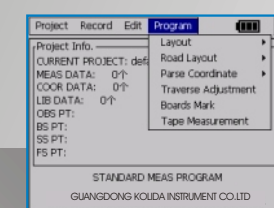
### Interface



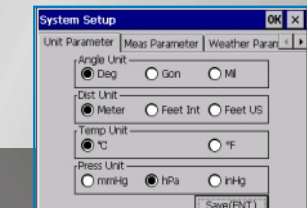
### Main Menu



### Measurement



### Parameter Setting



## Convenient Data Communication

Totally 3 ports for data storage and transmit (USB, mini USB, RS232).

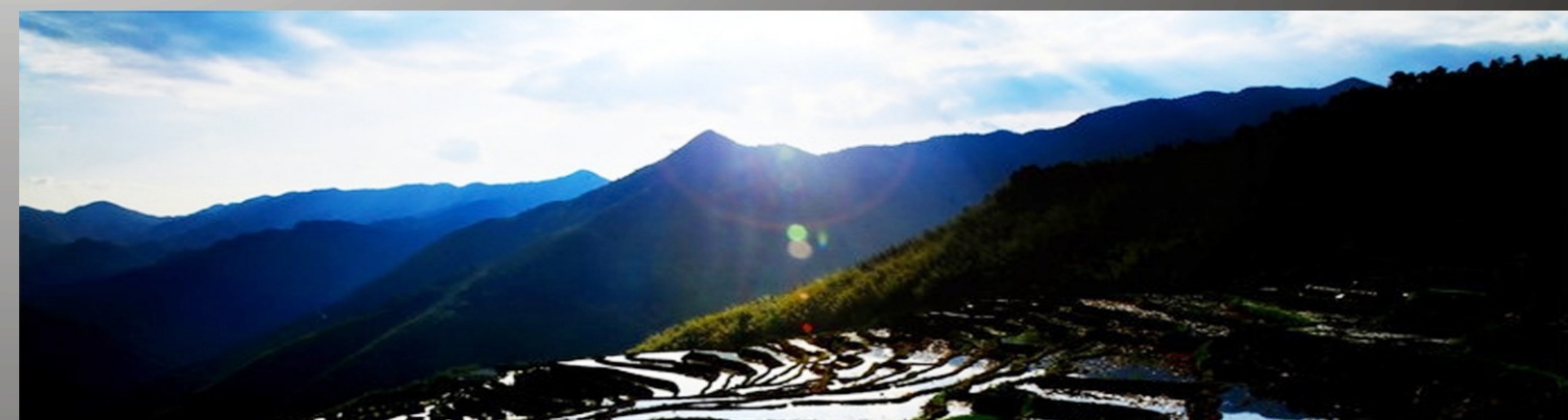
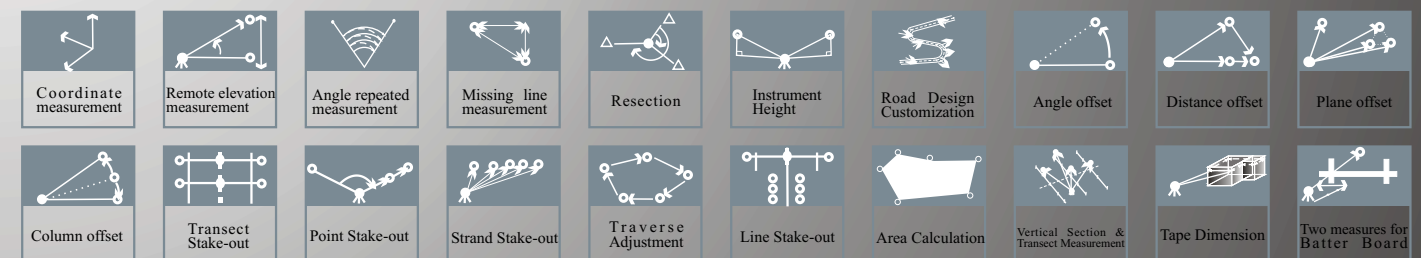


Upload/download data with USB storage



USB communication

## Abundant Surveying Programs

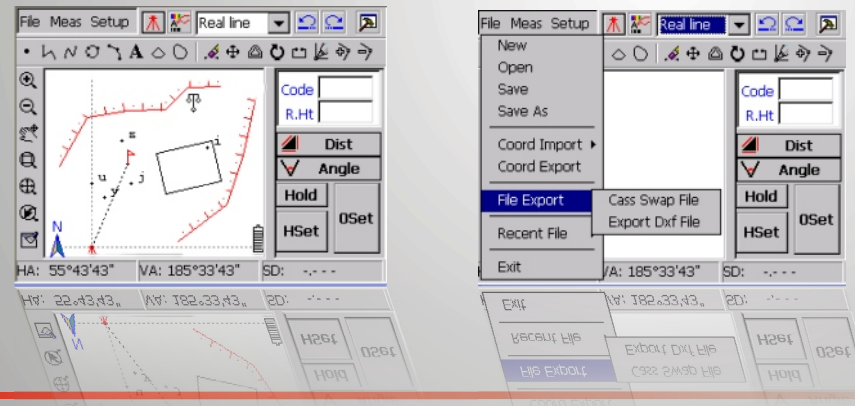


# THE ADVANTAGE OF KOLIDA WIN TOTAL STATION

Genius Series integration surveying software

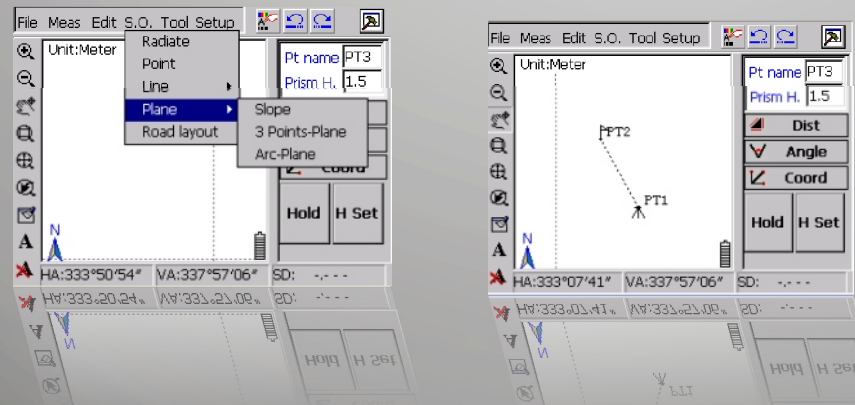
## Mapping Genius

Mapping Genius is an integration software for field data collection and mapping. With the advantages of Laptop, data collector, PDA, it allows user to collect coordinates in step with collecting diagrams, attributes, get final map in field by using SCB technology. It realizes the integration of indoor and outdoor works.

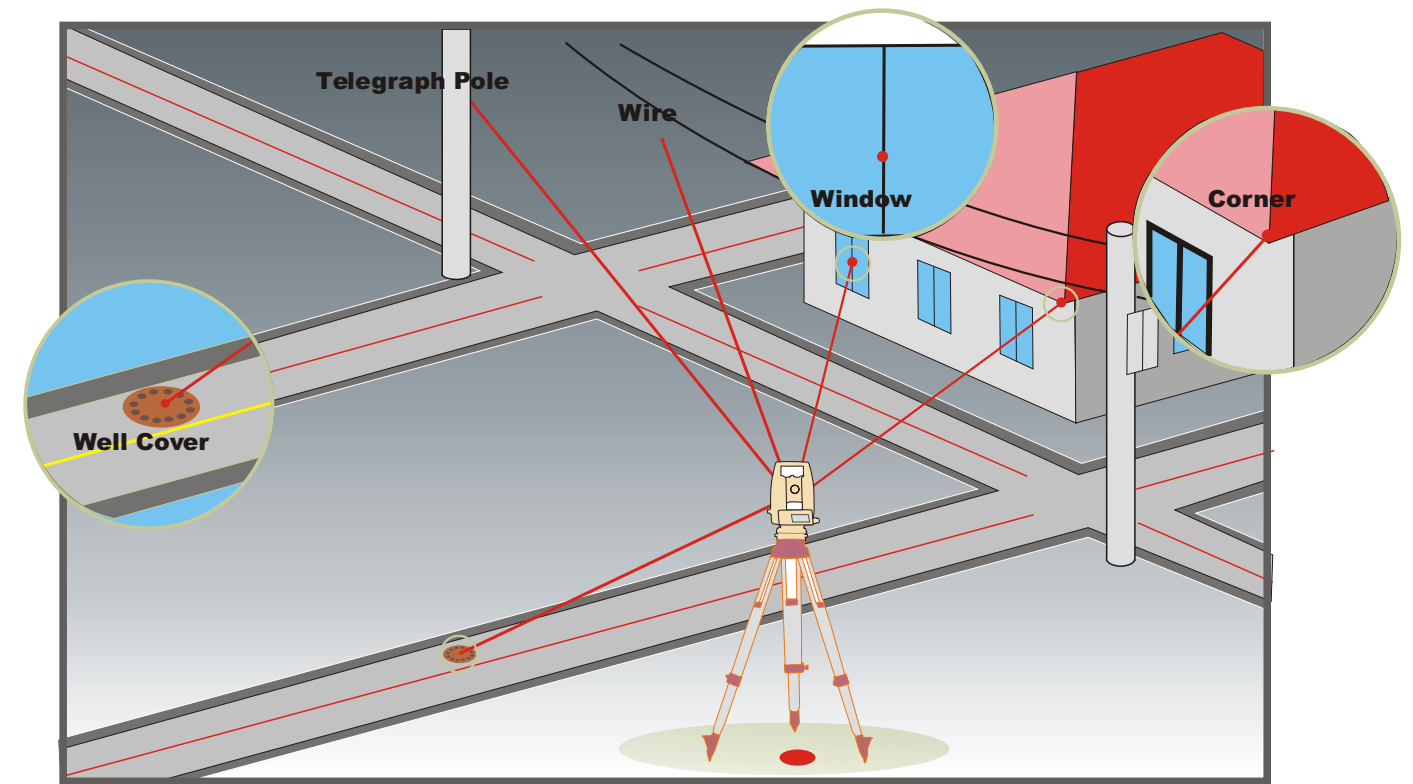


## Engineering Genius

Engineering Genius is especially designed for construction measurement works. It brings user data collection/ calculation and mapping programs which can be applied in various works like staking-out, curve measurement, section measurement, fill/ cut calculation, coordinate conversation, leadline measurement, level measurement, level section measurement.



# LASER DISTANCE MEASUREMENT



## APPLICATION OF KTS-580R



For target within 300m, you don't have to take pains to go around and set prisms, the surveying work is easily finished



Measure the corner and wall surface by yourself without setting the prism, the efficiency is improved.



Applicable in tunnel measurement, mining, garage construction, etc. Prism is no longer a necessity, which makes the job easier and more accurate.



House Measurement. Obtain the data directly, traditional steel ruler measurement is abandoned.



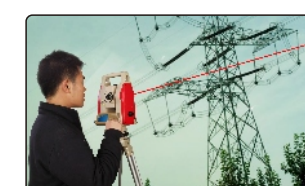
Large framework surveying and stake out



Prisms are unnecessary for Dam measurement. The measuring point is visible, which makes point-layout easier and more convenient.



Large ship-made surveying and positioning



No worry about how to set up the prism, no need to use REM application. It is easy to get the data of electric wire.